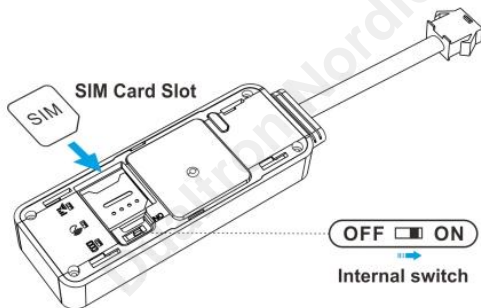


## GPS Installation Tutorial



GPS With Adapter

- **First, turn on the GPS switch.**

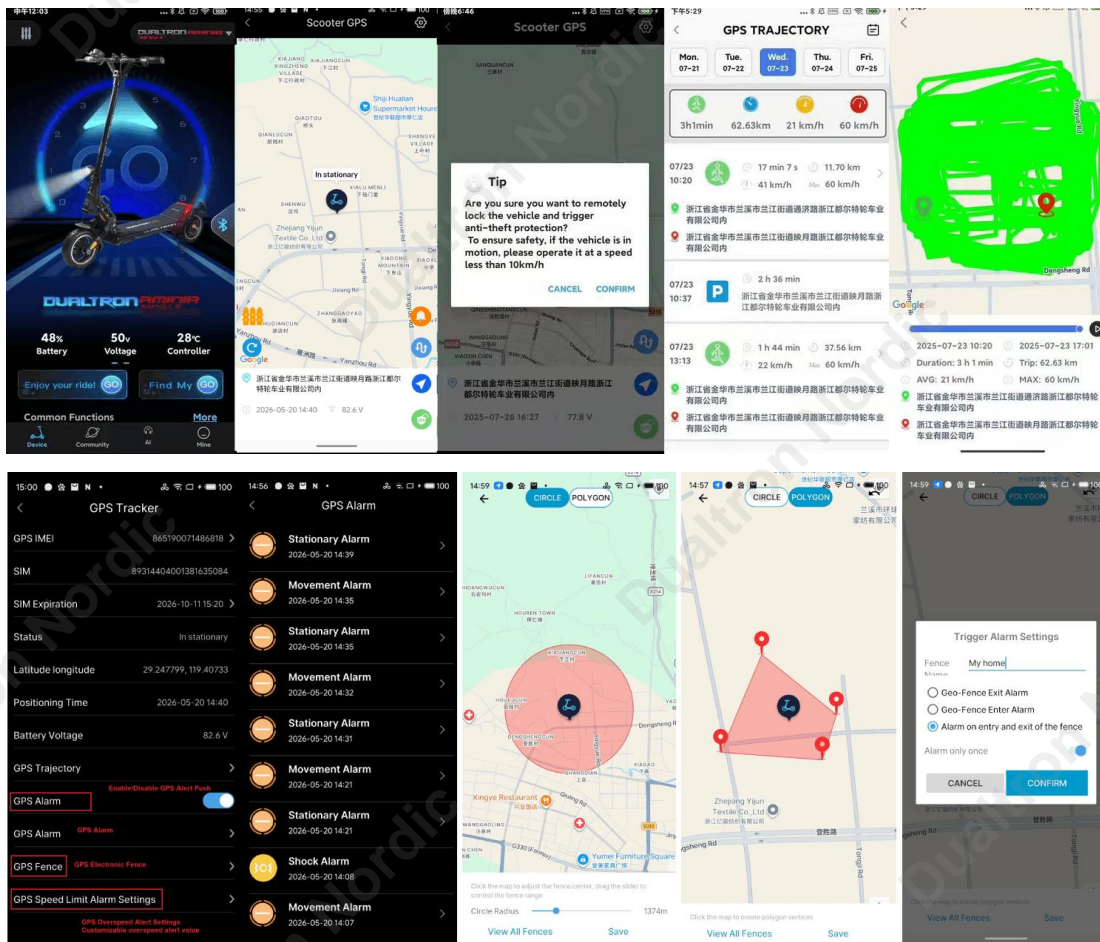


Blue light flashing represents searching for GPS signals.  
Red light represents power supply indicator light.  
Blue light represents GPS signal indicator light.  
Green light represents SIM card 4G signal indicator light.

- **Then use the Dualtron App to scan the barcode and bind the GPS to the vehicle.**

APP => Find Me => Scan the code to bind GPS





- At this point, GPS can be activated outside the scooter without being installed inside, usually requiring movement of 100 meters. If installed inside the vehicle, due to the influence of metal, more activity trajectory points are generally required for the first activation.
- Check the app, locate if it has been updated, and after confirming the update, you can manually install it into the vehicle.

### Installation steps:

1. Remove the screws from the pedal.

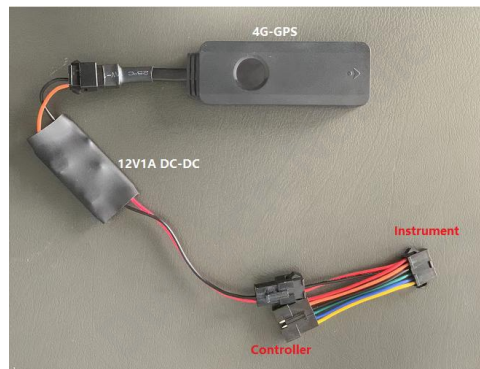


2. Find the interface for the six core instrument and control.

**36V-72V:**

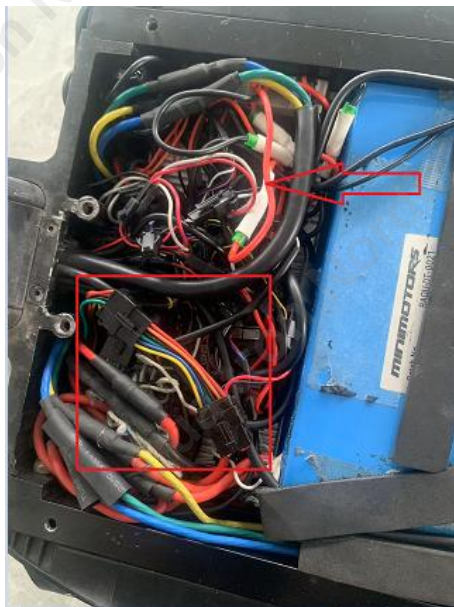
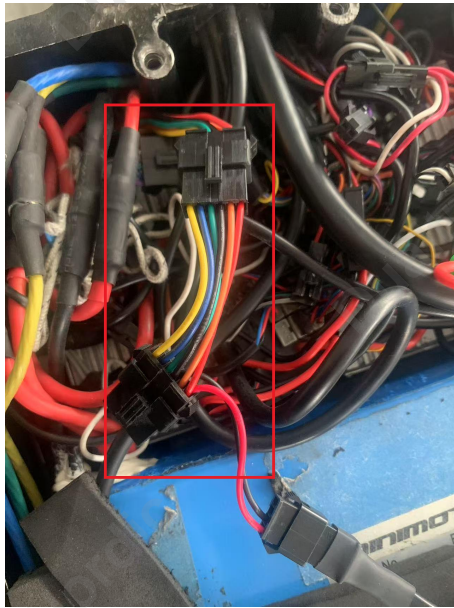


**84V:**



**Attention: The working voltage of GPS is 9-90V. If it is an 84V model X-LTD or STORM-LTD (76-95.4V), an additional 12V1A DC-DC needs to be added.**

3. Plug in the GPS interface and place it properl. (Attention: The logo side should face upwards, as the GPS antenna is on this side and the GPS signal will be much better)



Hide it underneath

4. Reinstall the pedal.